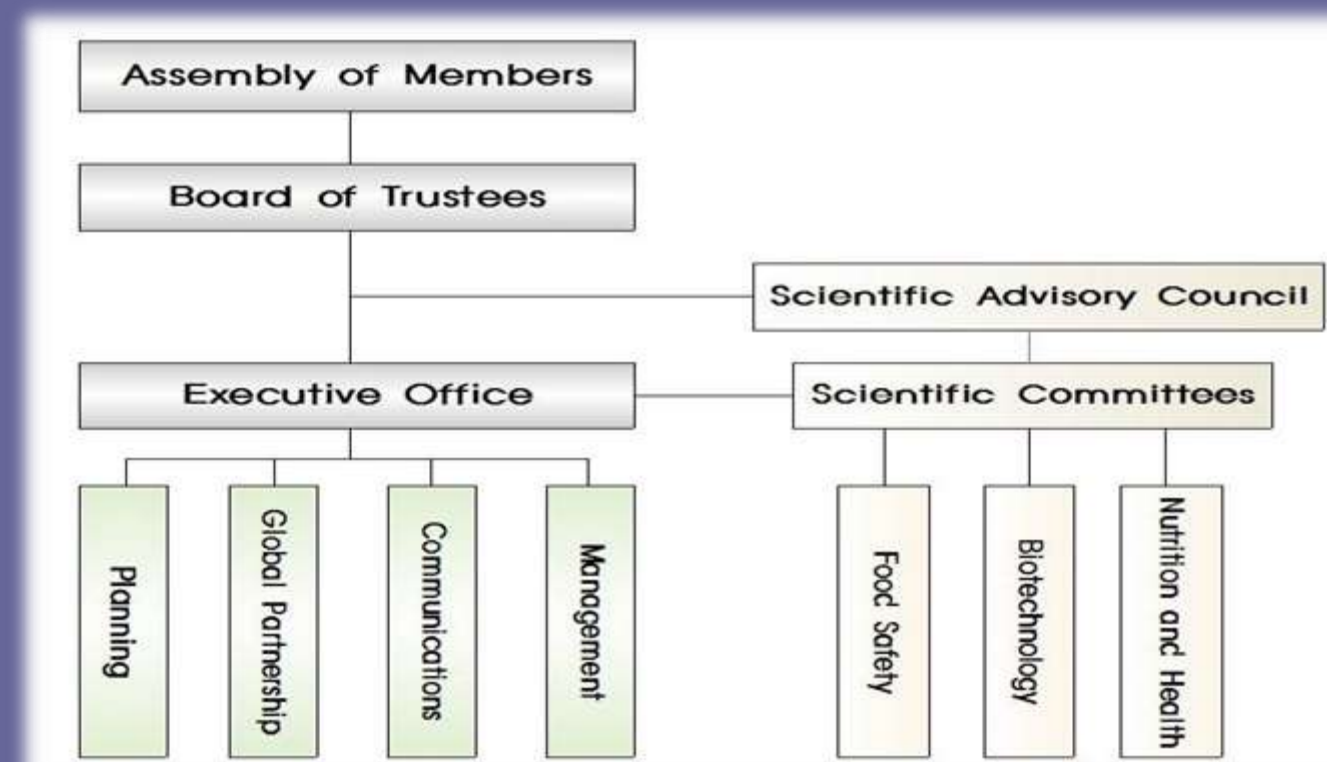


Organization

- Established in 1995, Seoul, Korea.
- President : Professor Ki-Hwan PARK, Ph.D.
- ILSI Global BOT of Northeast Region : Dr. Ik-Boo KWON
(Chair, ILSI Korea Board of Trustees)
- Executive Director : Ms. Ji-Young LEE



Scientific Committees

- Food Safety Committee
(Chair: Mr. Jeung Seung LEE, Daesang Co., Ltd.)
- Nutrition & Health Committee
(Chair: Prof. Oran KWON, Ewha Womans University)
- Biotech Committee
(Chair: Prof. Ki-Hwan PARK, Chung-Ang University)

Contact Information

- Address. Suite 505, 455 Cheonho-Daero,
Dongdaemun-Gu, Seoul, Republic of Korea
(02645)
- Phone. +82.70.4118.6755~6
- Fax. +82.2.3394.4553
- E-mail. ilsikorea@ilsikorea.org
- Homepage. www.ilsikorea.org

2015 Highlights of the Branch Activities

ILSI BeSeTo (Beijing-Seoul-Tokyo) Meeting

- ❖ Inter-branch Meeting among 3 ILSI Branches in Northeast Asia Region (China, Korea, & Japan) since 2009
 - To share the information on emerging food and nutrition safety issues, recent regulatory issues/changes and updates on the events on the risk assessment
 - To discuss possible collaboration to ensure food safety in the Asian region
- ❖ The 7th BeSeTo Meeting on Food & Nutrition Safety was held on November 10-11, 2015 in Jeju, Korea
 - Host : ILSI Korea in collaboration with ILSI Focal Point China, ILSI Japan
 - Observers: Representatives of ILSI Southeast Asia Region, ILSI Taiwan, and member companies
 - 43 Participants



The 20th Anniversary Commemoration Symposium

- ❖ 2015 International Symposium for Celebrating 20th Anniversary of ILSI Korea on 'Sustainable Technologies for Minimizing Loss of Food Commodity'
- ❖ Jointly organized with the Korean Society for Food Engineering on November 11-13, 2015 in Jeju, Korea
 - To strengthen the cooperative relationship in order to improve the understanding of existing data and generate new knowledge with the Korean Society for Food Engineering
 - Designed to provide professionals involved in research on minimum loss of food resources with a better understanding of new techniques for the future
 - Composed 3 sessions : I. Introduction on Sustainable Food Security, Challenge and Solutions
II. Advanced Technologies for Distribution and Preservation
III. Strategies for Value-added industrialization of Frozen Foods
 - More than 15 Domestic and International professional speakers presented relevant subjects from Government agencies, Academia, and Industries
 - More than 230 people attended



2015 ILSI Korea Annual Meeting & Seminar

- March 24, 2015. Seoul.
- Commemorative Ceremony of the 20th anniversary ILSI Korea
- Seminar on Food Safety & Risk Assessment
 - Food Safety and Big Data
 - Introduce the global platform of Risk Assessment and harmonization with big data technique and food safety



Participation to the ILSI Japan/MAFF Project on Investigation of Food Regulations (7th term)

- Research Period : July 2015~ March 2016
- Participated to the Workshop in Manila and Hanoi
(July, and December, 2015)



Participation to the 12th Asian Congress of Nutrition on Nutrition and Food for Longevity : For the Well-Being of All

- May 14-18, 2015 / Yokohama, Japan
- 2 Korean Speakers participated in the scientific session

One ILSI Project on Nutrition, Health and Well-being

- Review on Aging and The Elderly : What factors contribute to healthy vs. pathological aging in Korea?
- Period : 16months (Aug.2015~Dec.2016)
- Expected outcomes are publications in scientific peer-reviewed journals